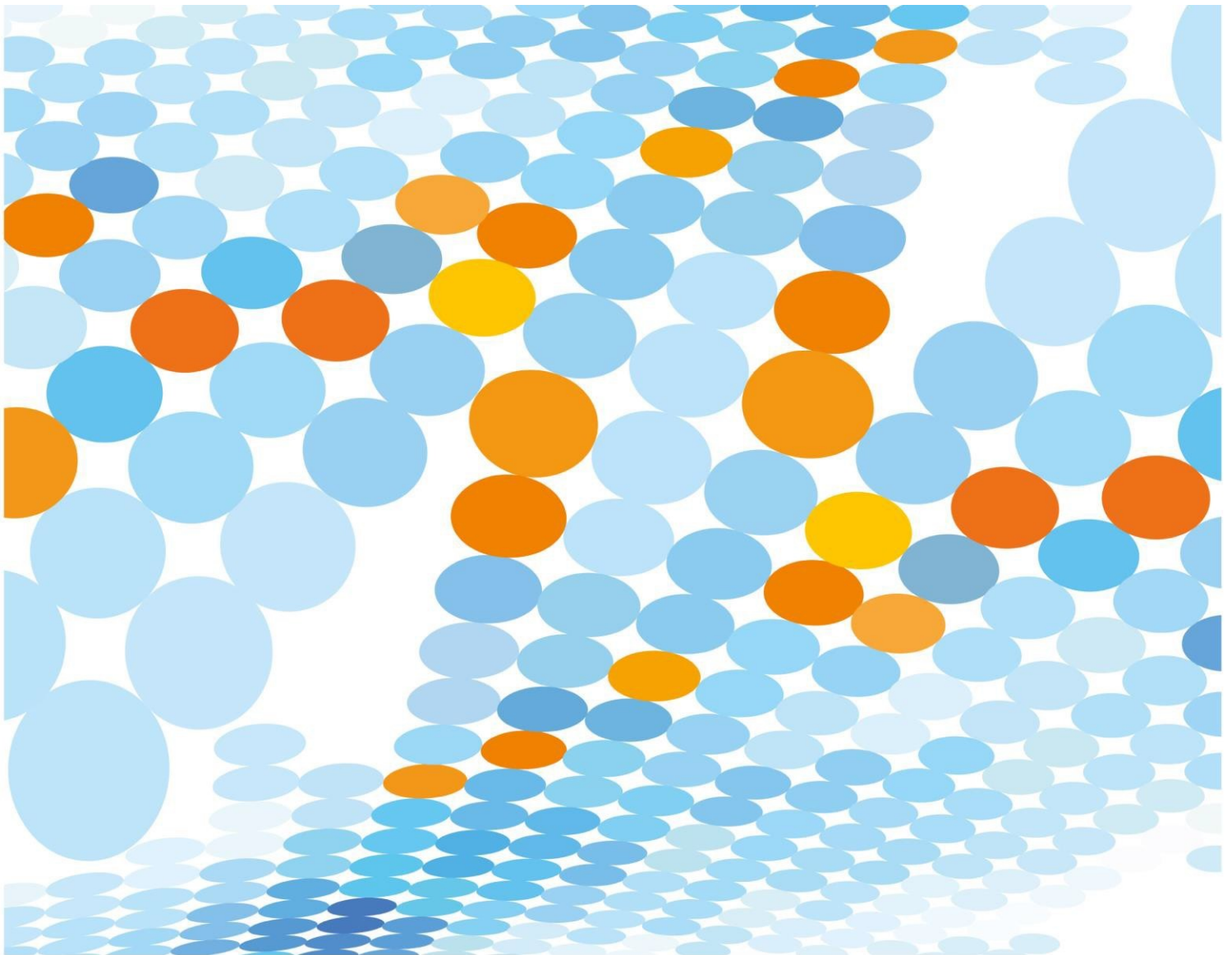


Parent and Carer's Fact Sheet

Using Microsoft Intune to connect a personal BYOD device to a Queensland State School network



BYOx V2 Overview

The Department of Education is implementing a new Bring Your Own (BYO) device solution called “BYOx V2” that enables students to use their privately owned devices to easily access school email, learning applications, printers and shared network drives at the school.

As part of the BYOx V2 project rollout, schools wireless systems will be updated to better handle access from private devices and Microsoft Intune, a mobile device management platform, will also be introduced.

Why are we changing?

The existing BYOx connection process is time-consuming and is problematic for some devices. In most cases this change will have a minimal impact on your child's experience, but will simplify the connection process and provide a more reliable service, as well as reducing the licensing costs to the school.

What does “enrolling your child’s device into Intune” mean for my child?

Enrolling your child’s device into Intune, will mean your child will be able to:

- access the school Wi-Fi network and have school email automatically set up and configured
- access the school’s learning applications and websites.
- self-manage their device

What can school administration staff see and do on my child’s device?

After installing Intune on your child’s device, your school can only see information that is relevant to school. The school cannot:

- see your child’s personal information.
- see what your child is doing on their device.
- see or locate where your child’s device is.
- see information on your child own applications (other than school applications) that are installed on your child’s device.
- uninstall any applications including your child’s own applications.

The school can only see information that may be relevant to the school.	The school does not monitor use of the device.
What Intune administrators can see on personal devices:	What Intune administrators cannot see on personal devices:
Device owner.	Cannot see your child's personal information.
Device name.	Cannot see what your child is doing on their device.
Device model.	Does not track student's locations / device location.
Device manufacturer.	Does not provide information on personally installed applications.
Operating system and version e.g.: iOS 13 or Windows 10.	Does not allow uninstalling of any applications including your child's own applications.
Apps managed by Intune only not personal apps	Home Network cannot be seen.
Device serial number and IMEI .	Cannot see calling and web browsing history.
Storage space	Cannot see Email and text messages.
	Cannot see contacts.
	Cannot see calendars.
	Cannot see passwords.
	Cannot see pictures, including what's in the photos app or camera roll.
	Cannot see, modify or delete files.



Frequently Asked Questions

Where is it best to enroll my child's device into Intune?

We recommend that your child enrolls their device into Intune at home using the home Wi-Fi internet connection.

How much home internet data allowance does Intune use?

A small amount of data is required to both enrol your child's device into Intune and subsequently to use Intune at home to access school email and learning applications. Home data allowance will be required if your child is accessing websites and school applications; the amount depends on the applications.

Can I have multiple mobile device management tools on my child's device?

Microsoft Intune does not work if other mobile device management tools are installed.

Can I use parental controls if my child's device has Intune installed?

Parental controls can be used in conjunction with Intune. Windows has [Microsoft Family](#) to manage screen time and block and manage apps and features on your child's device. For iOS, [refer to parental controls on your child's iPhone, iPad and iPod touch](#) to explore a range of iOS parental control features.

Is there any cost associated with using Intune?

There is no cost for your child to use Intune. Your child's school may decide to impose charges for supporting BYOx or application licensing costs, however, this is separate from Intune.

How do I enroll my child's device with Intune?

See the following video guides to setting up with InTune

[Windows](#)

[Mac](#)

[iPad](#)

What if I am having trouble with the enrolment?

If you are having trouble or have further questions, contact your school IT support or school administration staff by emailing IT@clevelanddistrictshs.eq.edu.au

Please note, your child will need to stay logged in for up to 15 minutes after enrolment is done, to make sure all Intune set-up is complete.

